

# CENTER POST NEWSLETTER

[chs-mo.org](http://chs-mo.org)

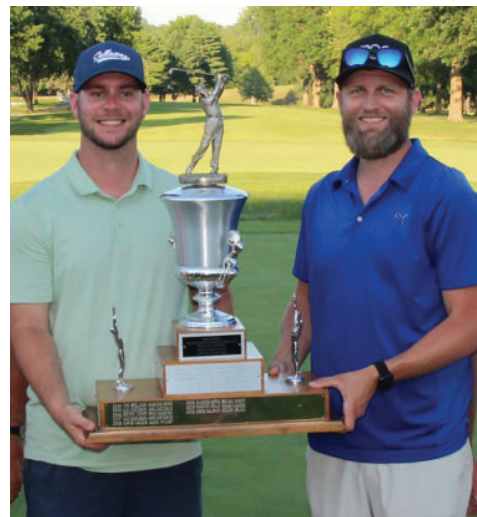


**CENTER FOR HUMAN SERVICES**  
Life Beyond Limitations

## Golf Tournament Highlights

**NEWS** The Center for Human Services celebrated the 50th Annual CHS Golf Tournament & Auction, July 8–10th at the Sedalia Country Club.

The weekend event drew hundreds of guests including past tournament champions, many golfers from our local community, neighboring cities, states, and sponsors, to support children’s services in Missouri. The Center for Human Services is grateful for the generosity of many donors such as Starline Brass, Assured Partners, Central Bank, and The Heckart Family Foundation. Many thanks also to the weekend golfers and attendees. Thanks to their support, CHS was able to raise over \$100,000 to provide critical children services in our community and throughout Missouri.



2022 Tournament Champions, David Baldwin and Sean Paul

## Our Mission Expands

**Service Coordination** adds nearly 2,000 people needing case management services in Jackson County, Callaway County and the St. Louis Region. St. Louis represents a significant expansion into new territory.

**Family & Child Development** is awarded \$4.4M Federal Grant to provide Head Start and Early Head Start services in six more counties: Bates, Cass, Cedar, Henry, St. Clair and Vernon. This grant will provide critical developmental services to approximately 262 children, ages 3 to 5, and 136 infants, toddlers and pregnant women.

CENTER POST NEWSLETTER



## The Center for Human Services Announces New Brand

The organization-wide brand, complete with a new logo and mission statement, “Life Beyond Limitations,” was unveiled at the 50th Annual Golf Tournament and Auction recently held in Sedalia.

The updated brand reflects the state-wide organization’s identity as a provider of services for people of all ages across Missouri. The new logo design reflects and represents the core of CHS, from individuals and their families to employees and volunteers.

“The Center for Human Services has such a rich tradition of meeting the critical needs of all ages from infants to the elderly,” said CEO David Kramer. “We are thrilled to have a logo which represents them and our focus on their development to live their best life.”

In 1955, CHS began serving six children in Sedalia, Missouri. Since then, it has grown to serve 39 counties and nearly 8,000 individuals across the state. CHS currently provides support through nine service lines: Missouri First Steps, Early Head Start, Aquatics, Behavioral Therapy, Employment Services, Community Living, Service Coordination, Day Services and Host Homes.

More information can be found at [chs-mo.org](http://chs-mo.org).

CONTENT	
The Center for Human Services	01
New Service Lines	02
Department Collaboration	02
Success Story: Meet Molly	03
Employee Spotlight: Karen Nolting	03
Golf Tournament Highlights	04
Our Mission Expands	04



CENTER POST NEWSLETTER

## NEW SERVICE LINES

CHS recently expanded the service array to include two additional service lines.



**Applied Behavioral Analysis (ABA)** offers customized 1-on-1 behavioral supports for all ages and on-hand staff specializing in autism, intellectual, and developmental disabilities. ABA at CHS consists of two main therapy options: Direct Therapy offers personalized treatment plans tailored towards individual goals or needs, while Care Giver Training Coaching and Education is also available to the person's family, friends, etc., to help them better understand the diagnoses and/or treatment plans.



**Host Home** services offer an alternative residential support option for persons with an intellectual or developmental disability seeking a true family and a home. This a 24/7 residential service for adults provided by a person or family, often known as a Host Parent or Host Family, in their home after a careful matching process with the adult or child with a disability.

## Department Collaboration

Employment Services & Community Living collaborate to meet more needs.

After demonstrating our high-quality services in Henry County, the Employment Services (ES) department was contacted to see if we could provide additional services. Feedback from Henry County Service Coordination was that the needs of the community were not being met and that current providers were reducing their services. ES and the Community Living (CL) teams came together to brainstorm solutions. How could we best meet the needs of these families by combining staffing and other resources? Their solution was to break our historical practices and communicate outside of our departmental silos.

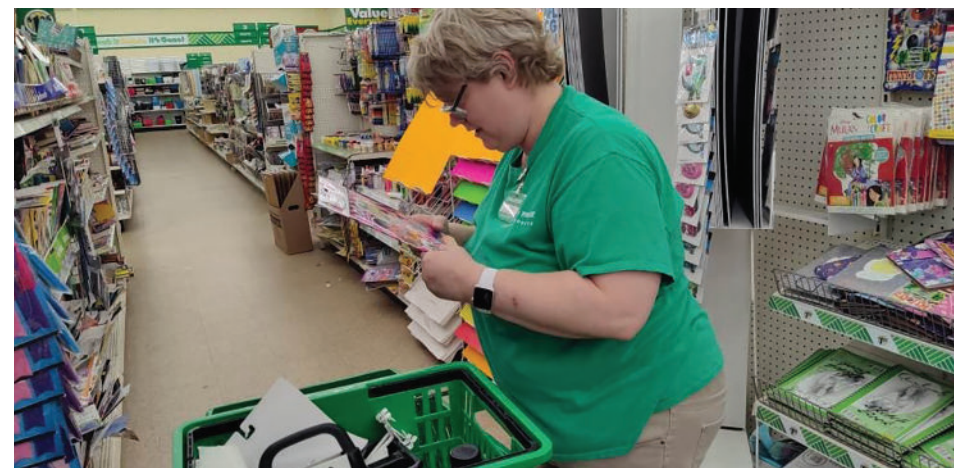


Community Living



Gordan – Community Living

Now, ES and CL will be providing services to the family members in a unique way by cross-training employees to work multiple service lines. This collaboration will allow for the new employees to work as needed for both departments and their vacation/benefits will be shared interchangeably amongst them. We see this as a great solution for services in rural areas and with the limited available workforce. We also believe that quality starts with our team members and the key is to hire the right people. Well done, Employment and Community Living!



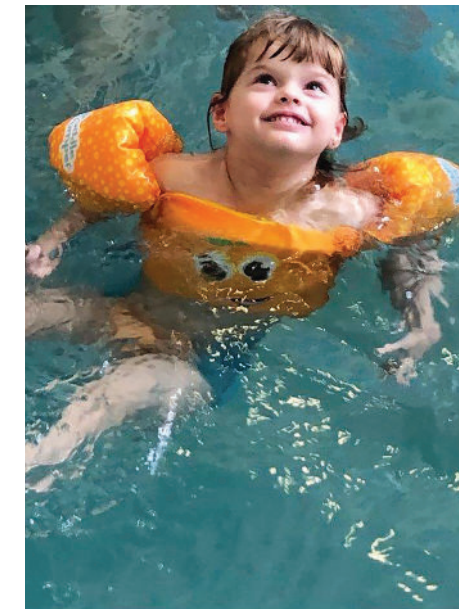
Barb has become a reliable employee at Dollar Tree.



## SUCCESS STORY

### Meet Molly

Molly Spatz was born on July 7, 2019, in Peterborough, England. When Molly was only 12 weeks old, she and her mother began swimming lessons. It was clearly evident that Molly loved the water.



When Molly was eight months old, Covid-19 put the United Kingdom in lockdown. Because of this, Molly was unable to connect with other children for months, and her parents, Angela and CJ, started noticing some behavioral changes. Molly began walking at 12 months, but other milestones were not occurring as they should. At 17 months old, Molly was still not talking. Her parents decided it was time to reach out for Early Intervention help in the UK, but with the pandemic still limiting social interactions, meetings had to be done via Zoom. A few months later, Molly's family was transferred to Whiteman Air Force Base in Missouri, where they became connected with Missouri First Steps. Shortly after that, Molly was diagnosed with autism.

As Molly and her family got more involved with Missouri First Steps, they quickly became experts in the services that CHS offers. Molly received assistance from Missouri First Steps, CHS Service Coordination, and various types of Aquatics, Speech, Occupational, and Physical Therapy. Her comprehension, listening, motor, and speaking skills quickly improved after beginning the focused therapies. Molly started to grow in each area she was lacking and especially excelled in Aquatic Therapy due to her love for the water.

Molly is now on track to achieving her developmental goals.

Her family states: "Molly is much more social, pre-verbal, and seems to comprehend better than ever. Molly found her spark and I believe it's due to Missouri First Steps finding a way to plug her in."

Center for Human Services is a proud provider of Missouri First Steps

## EMPLOYEE SPOTLIGHT

### Karen Nolting Family Advocate of the Year Recipient

Karen Nolting, EHS Family Advocate, was selected as the Region VII Family Advocate of the Year recipient. Her dedication to the work and her impact on children and families was a strong part of her nomination. We are excited and proud to call her one of our own. Congratulations Karen, job well done!

